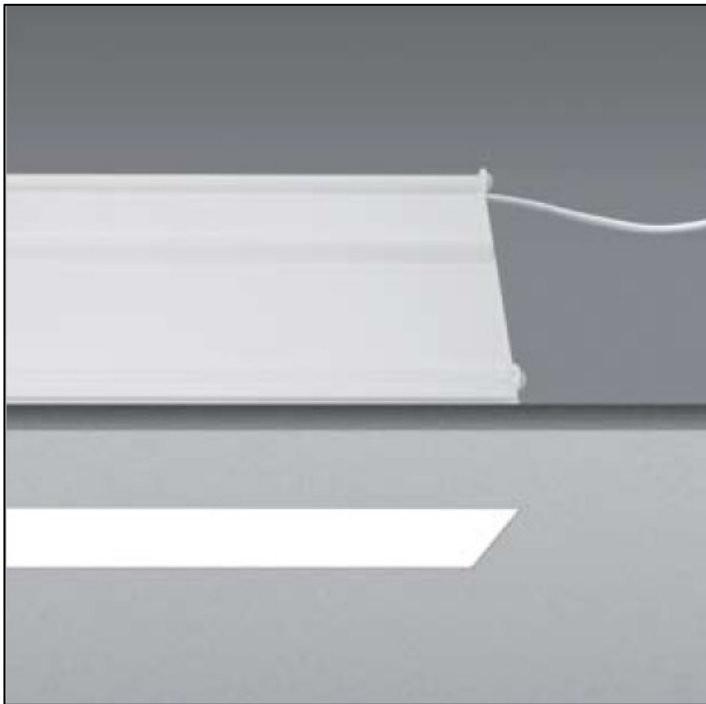


100 LINEAR PLASTER IN



General Information:

A ceiling recessed luminaire, ideal for general lighting. A discreet fitting plastered directly into the ceiling, suitable for all interior applications.

The fitting is supplied with a glass diffuser that sits flush with the ceiling.

Length Options:

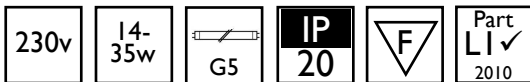
- 600mm (2 x 14w)
- 900mm (2 x 21w)
- 1200mm (2 x 28w)
- 1500mm (2 x 35w)
- 1800mm (4 x 21w)
- 2400mm (4 x 28w)
- 3000mm (4 x 35w)
- Made to measure – please call Light IQ for details

Lamp Options:

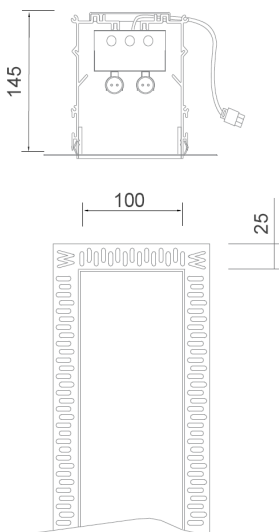
- 230v, 2 x 14-35w G5 Fluorescent (T5)
- 230v, 4 x 21-35w G5 Fluorescent (T5)

Ballast Options:

- Non dimmable
- Dimmable 1-10v
- Dimmable DSI
- Dimmable DALI



Dimensions:



Length: Cut-out:

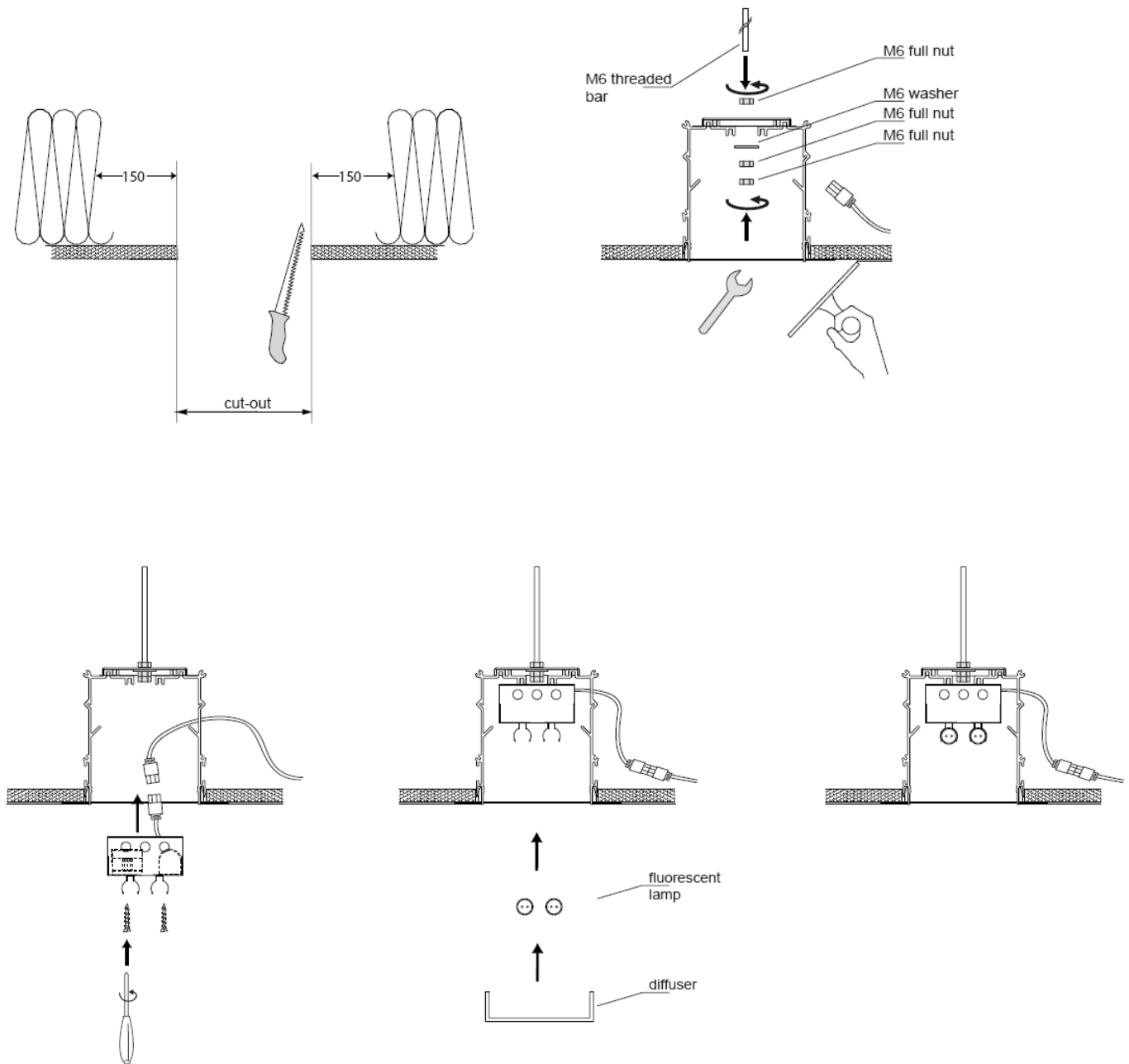
- 600mm – 620 x 120mm
- 900mm – 920 x 120mm
- 1200mm – 1220 x 120mm
- 1500mm – 1520 x 120mm
- 1800mm – 1820 x 120mm
- 2400mm – 2420 x 120mm
- 3000mm – 3020 x 120mm

Please note that these drawings are not to scale

LAMP NOT INCLUDED.

CAUTION: Care should be taken with positioning of the light fitting as it will become hot in operation.

Installation Instructions



All linear fluorescent luminaires require support from above as shown, 2 supports per luminaire (if greater than 1500mm in length additional rod supports are required at 750mm intervals). Care must be taken when plastering the housing that no excess plaster is applied on the inside of the luminaire as this is detrimental to the operation of the luminaire.

Mains power supply to enter through end plate grommit hole.

During installation the aperture width must be maintained at 100mm.