

Two Terrace Areas

CHARLOTTE ROWE

DIMENSIONS 12 x 5m (40 x 16ft)

SOIL clay

ASPECT south-west facing

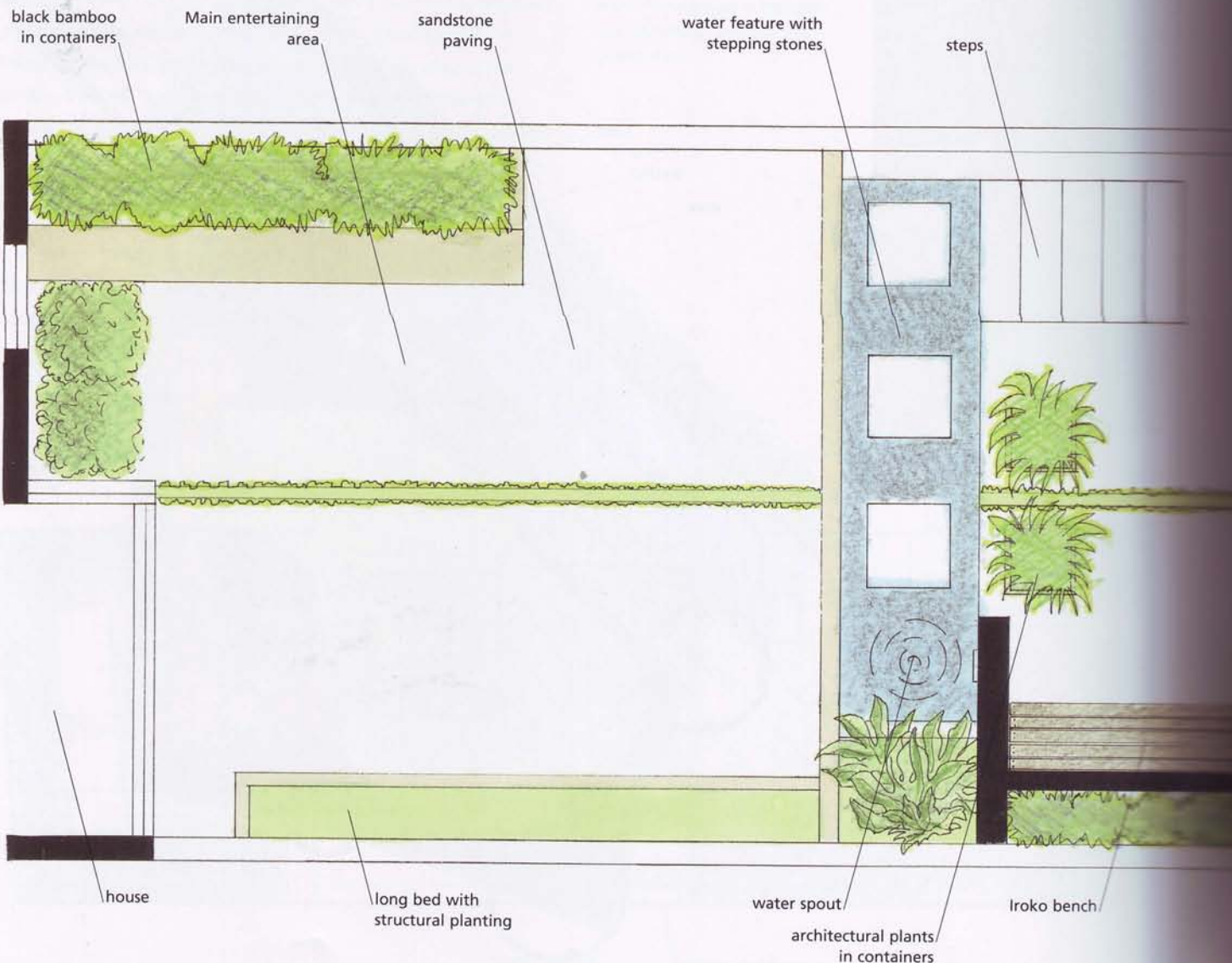
KEY FEATURES limestone stepping-stone water feature

Renovation of the owners' house using limestone, simple white walls, and hardwood finishes provided the inspiration for this garden. The existing space was overgrown and claustrophobic-feeling, with the upper level very close to the house. The owners didn't have time for maintenance and wanted planting with a light, Mediterranean feel to reflect their own backgrounds.

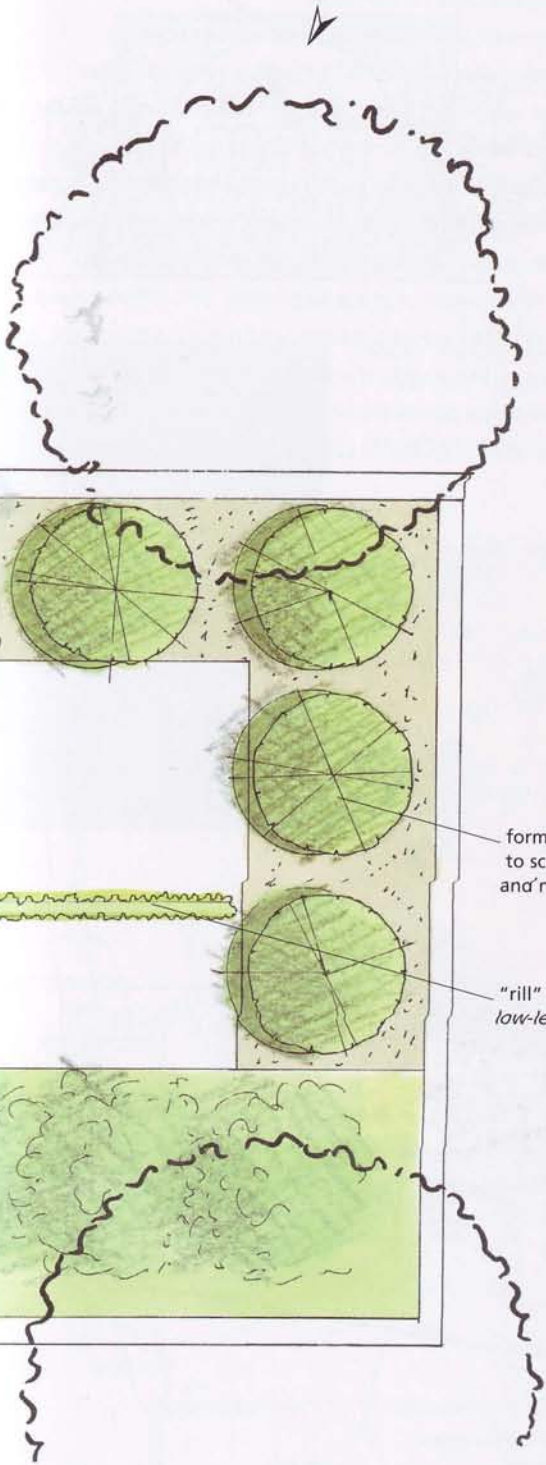
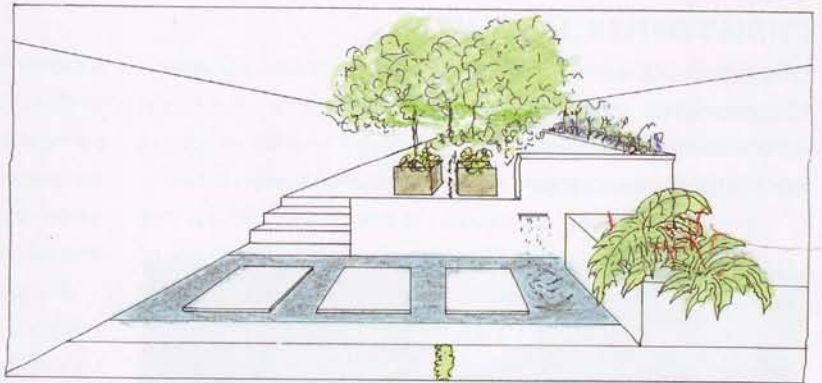
The upper level of the garden was pushed back to create two good-sized, spacious terrace areas. Paving is in Portuguese

limestone and the walls are lime-washed and topped by simple bespoke trellis. The central focus of the garden is a limestone stepping-stone water feature filled with black pebbles and fed by a simple copper water spout. To complement this, a narrow planted "rill" of polished pebbles and *Soleirolia soleirolii* runs through the garden. Limestone steps lead to the higher level, where a hardwood bench is set against the wall to catch the sun.

The planting is a simple combination of shrubs and perennials using a green, blue, and white palette. Mediterranean specimens include clear-stemmed olive trees, rosemary, and lavender. Structure is provided using clipped *Prunus lusitanica* and *Cornus alba L.* with additional colour from *Geranium 'Johnson's Blue'* and *Allium sphaerocephalon*.



right The perspective view concentrates on the change of level and the pool as the central features of the garden.



formal planting to screen back wall and neighbour

"rill" of pebbles and low-level planting



above The limestone paving, white walls, and simple planting fulfil the owner's request for this garden to have a light, Mediterranean feel.

below The limestone stepping stone water feature is particularly effective when lit up at night.

